

Model**ARVEY A1****Class****1KW230/24V****ARVEY**

POWER TO GO

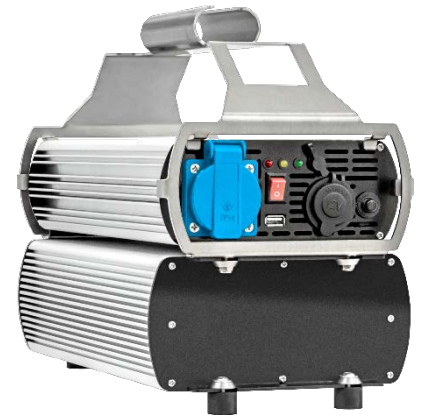
ARTICLE NUMBER: 010100006

SOLAR GENERATOR WITH ENERGY STORAGE SYSTEM

230 V solar power to go

ARVEY is your personal portable plug. This device runs many common house-hold electric devices independently of your location and almost without emissions - with self-generated solar energy. Any energy surplus gets stored and stays available to use even after the sun has set.

On a farm, on the road, in a trailer, for projects in the field, on photo shootings and everywhere else E-Generator is your companion you can rely on.



TECHNICAL DATA:

WEIGHT	2.9 kg Electronics, Set weight 11.2kg
DIMENSIONS	345mm * 175mm * 75mm (electr.) 415mm * 190mm * 280mm (Set)
CASING	Aluminum, brushed
OPERATING TEMPERATURE	-25°C to 60°C
IP CLASS	IP44

PERFORMANCE:

OUTPUT VOLTAGE	230 Volt AC 12 Volt DC, 180W 20 Ampere 5 Volt DC, 2.1 Ampere
OUTPUT FREQUENCY	60 Hz / 50 Hz
OUTPUT FORM	Pure sine wave
OUTPUT RANGE	22.5 Volt – 29.2 Volt
CONTINUOUS OUTPUT AC	1000 Watt
BRIEF PEAK OUP TUT AC	2000 Watt
INVERTER EFFICIENCY	90%
STANDBY POWER CONSUMPTION INVERTER ON	< 200 mA
STANDBY POWER CONSUMPTION INVERTER OFF	< 8 mA
SOLAR CONTROLLER	24 Volt 40 Ampere
MAXIMUM PV VOLTAGE	Max. 40 Volt, 48 Voc

AIRLINE INFORMATION

This device contains one Lithium-Iron-Phosphate-Polymer Battery (LiFePO4) included in the equipment with a battery raw weight of 4.2kg and 480Wh of nominal capacity.

According to IATA guidelines it is classified under:

- UN3481
- PI 967 Section I
- IMP: RLI

Packaging must be marked with the following label:



The ARVEY battery is encased in a 3mm sealed aluminum casing and protected from spilling, explosion and fire.

Passed UN38.3 test reports can be requested from:

support@axsol.eu

Model

ARVEY A1

Class

1KW230/24V



ARVEY

POWER TO GO

ARTICLE NUMBER: 010100006

SOLAR GENERATOR WITH ENERGY STORAGE SYSTEM

ELEMENTS FRONT:

Outlet 230 Volt AC

Car Charger 12 Volt DC

Outlet 12 Volt DC

USB 5 Volt 2.1 Ampere

2 LED Inverter status (green/red)

1 LED System overheat (orange)

ELEMENTS REAR:

Solar cable connector MC4 + (plus)

Solar cable connector MC4 - (minus)

Battery cable connector covered full + (plus)

Battery cable connector covered full - (minus)

ELEMENTS TOP:

LED display

CONNECTORS INTERNAL:

USB 5 Volt 2.1 Ampere

SAFETY:

ANTI VOLTAGE PROTECTION	2 * 15 A fuse
INVERTER PROTECTION	2 * 15 A fuse
BATTERY LOW VOLTAGE ALARM	22.5 Volt - 23.5 Volt
BATTERY LOW VOLTAGE SHUTDOWN	< 21.5 Volt
OVERLOAD PROTECTION	1100 Watt
SHORT CIRCUIT PROTECTION	20 Ampere (DC output)
ANTI REVERSE POLARITY PROT.	40 Ampere

OPT. ACCESSORIES

Solar panels

Solar cable

Grounding cable

Battery

Battery cable

AC-Charger

Fuses 40A

Lamp 2W, 12V

...

PERFORMANCE DATA ENERGY STORAGE:

CHARGE VOLTAGE	29,2 Volt
NOMINAL VOLTAGE	24 Volt
NOMINAL CAPACITY	20 AH at 0,5C discharge
CHARGING CURRENT	Standard charging: 0,25C Quick charging: 0,5C
STANDARD CHARGING PROCEDURE	ARVEY grid charger
CHARGING DURATION	Standard: 5,0 hours Quick: 3,0 hours
CHARGING CURRENT	50 Ampere
DISCHARGING CURRENT	50 Ampere
DISCHARGE-CUTOFF VOLTAGE	21,4 Volt
STORAGE TEMPERATURE	-10 °C to +50 °C
CHARGE CYCLES	>=1000
CHARGE RETENTION	5%
RAW BATTERY WEIGHT	4,2 kg
BATTERY TYPE	Lithium-Iron-Phosphate Polymer

SAFTEY TESTS:

SHORT CIRCUIT	No explosion, no fire
OVERCHARGE	No explosion, no fire
NAIL TEST (PIERCING)	No explosion, no fire
OVEN TEST (OVERHEATING 130°C)	No explosion, no fire
VIBRATION TEST	No fire, no spill
DROP TEST (2* 1,0 METERS WITH ROTATION)	No fire, no spill
CERTIFICATIONS	CE, RoHs, compliant to UN38.3

Specifications and Design can be changed at any time and without further notice.

State: AUG 2019